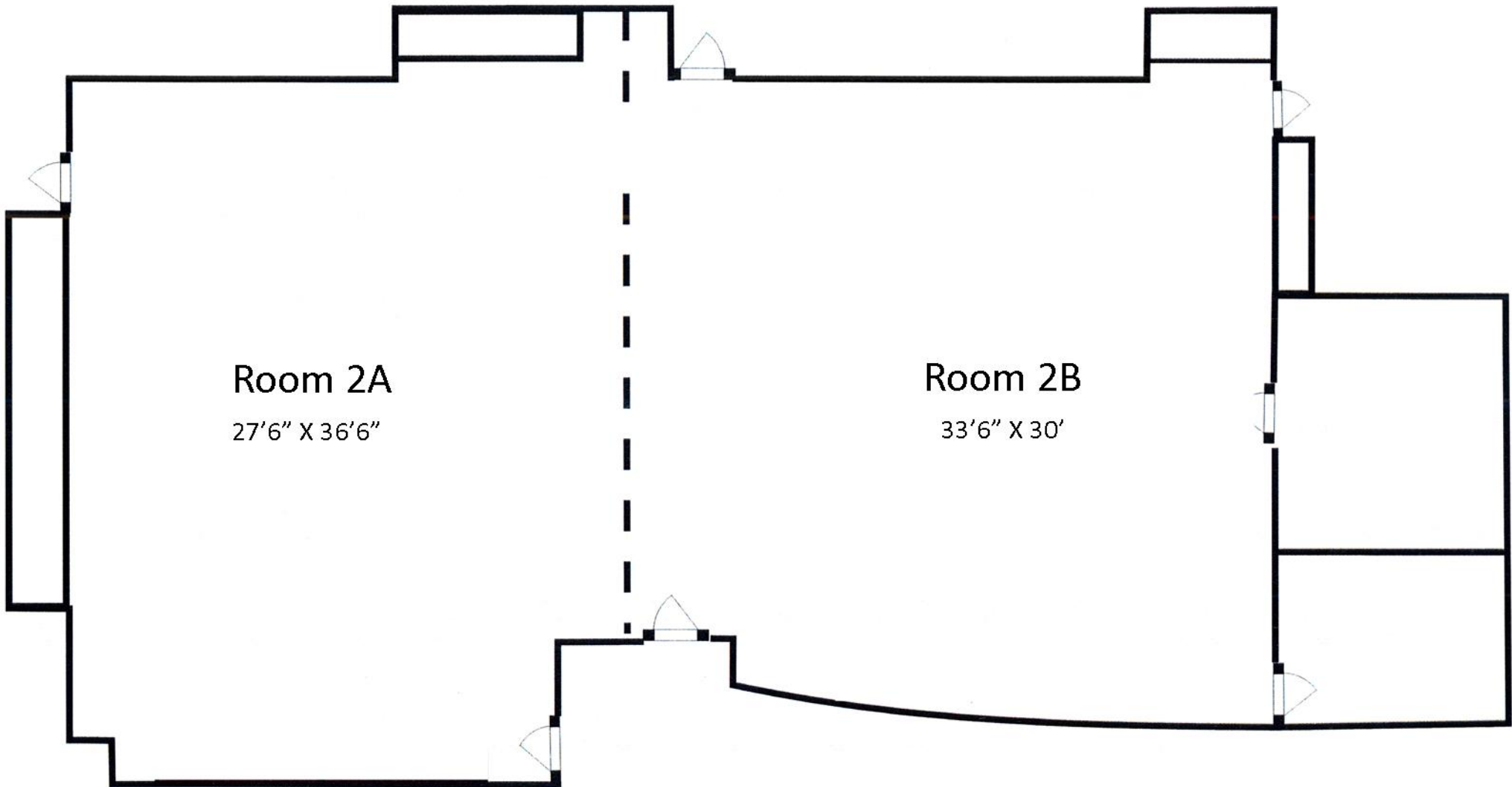


Activity Room 2

58'6" X 32'

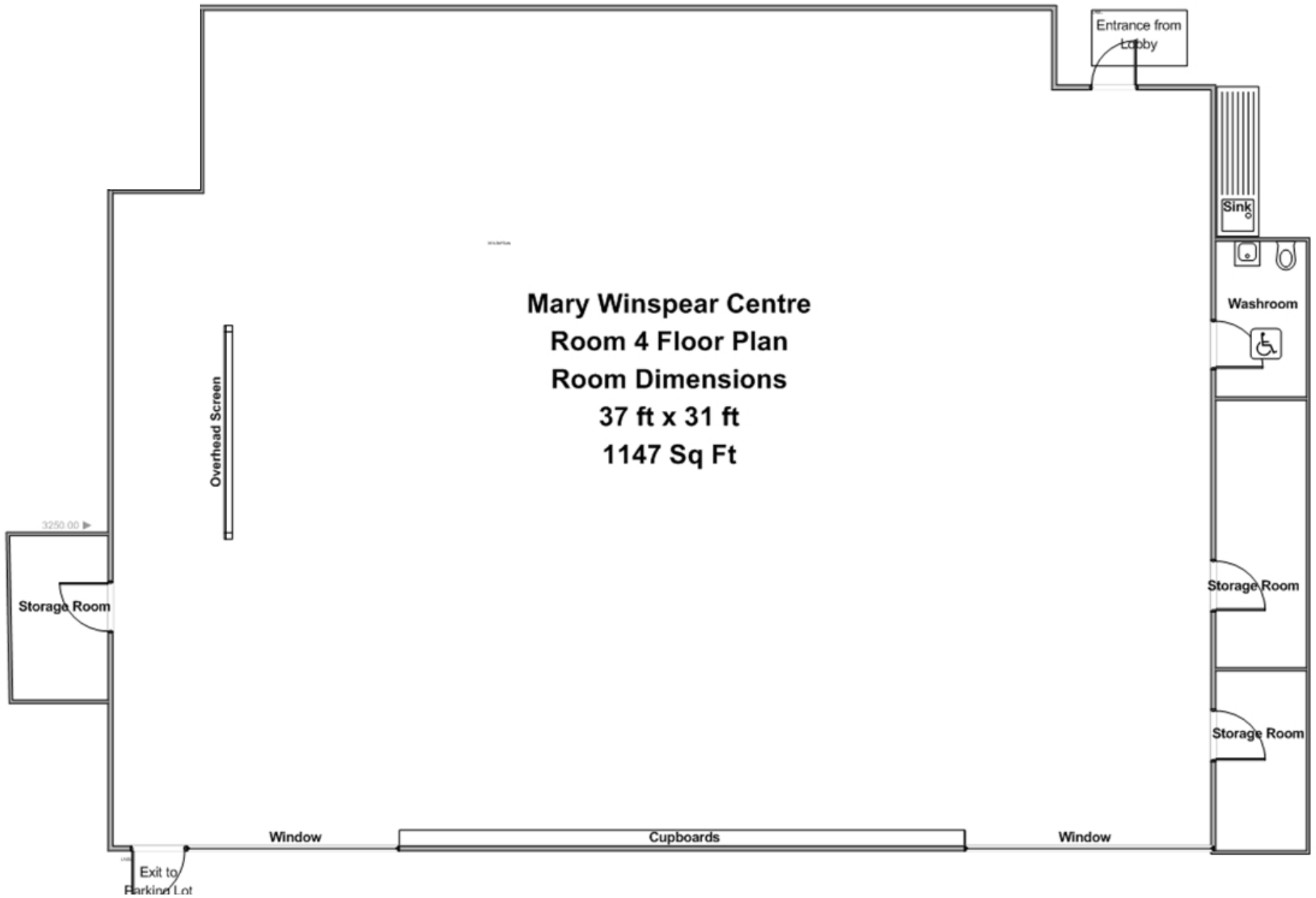


Room 2A

27'6" X 36'6"

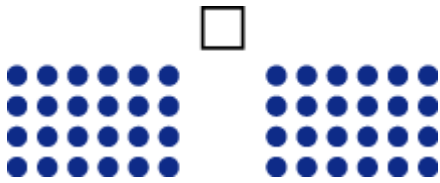
Room 2B

33'6" X 30'



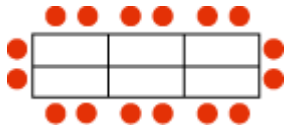
Mary Winspear Centre
Room 4 Floor Plan
Room Dimensions
37 ft x 31 ft
1147 Sq Ft

Auditorium or Lecture or Theatre



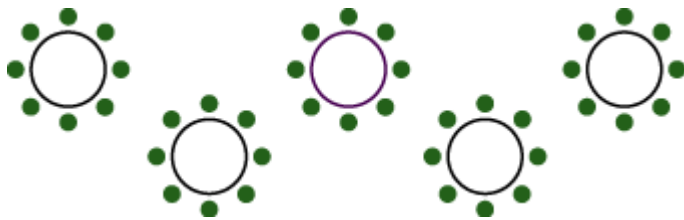
This setup, using chairs only, provides the maximum capacity for each room and focuses the group on the presentation.

Conference or Boardroom



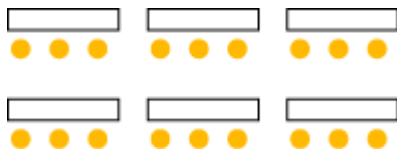
This style provides the maximum work space and an excellent setting for group discussion. Larger groups may require a hollow square version of this table setting.

Banquet



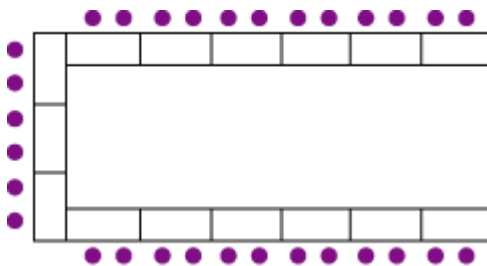
Most often appropriate for meals, this setting can also be used for small work groups.

Classroom



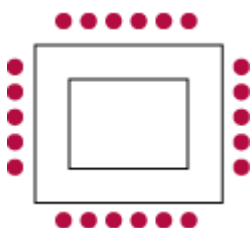
This setup with tables and chairs provides a comfortable setting for longer periods of time and provides a better work surface for participant note taking.

U-Shaped



This style works well for a session that combines both presentation and some group interaction or discussion.

Hollow Square



Similar to conference or boardroom style, this style provides the maximum work space and an excellent setting for group discussion.