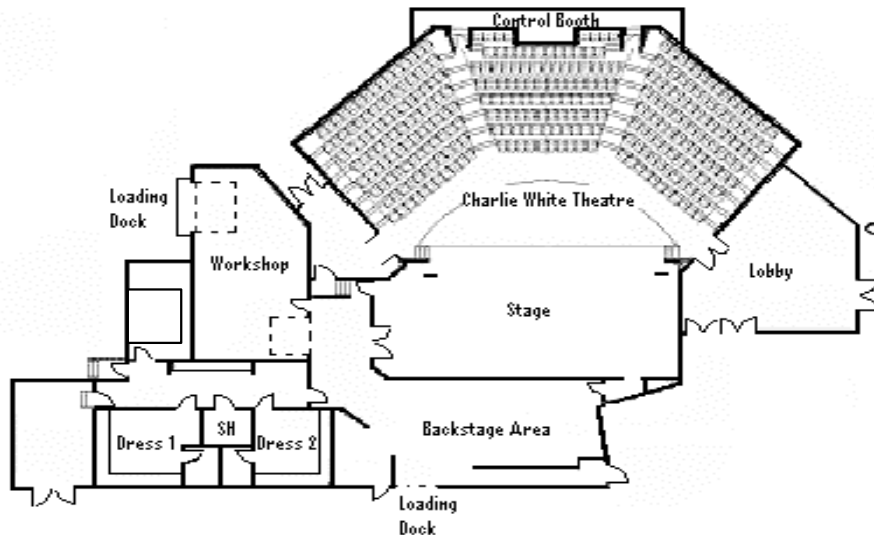




Mary Winspear Centre
Conferences, Special Events and Live Theatre

Charlie White Theatre



2243 Beacon Ave.

Sidney, BC V8L 1W9

Phone 250.656.0275

Fax 250.656.0271

www.marywinspear.ca

The Charlie White Theatre is located in The Mary Winspear Community Cultural Centre at Sanscha, in beautiful Sidney, British Columbia.

The Centre is located at the gateway to the town, at the corner of the Pat Bay Highway, and Beacon Ave., Sidney's main street. It is visible to traffic going in both directions, and is a landmark worthy of note. The Centre was the 2002 recipient of the ***Community Building Award***.

The Theatre is a perfect venue for all occasions:

- ***Live Performance (musical/theatrical)***
- ***Lecture***
- ***Business Meeting***
- ***Seminar***
- ***Convention***
- ***Readings***
- ***Religious Service***
- ***Multimedia Presentation***
- ***Private Function***

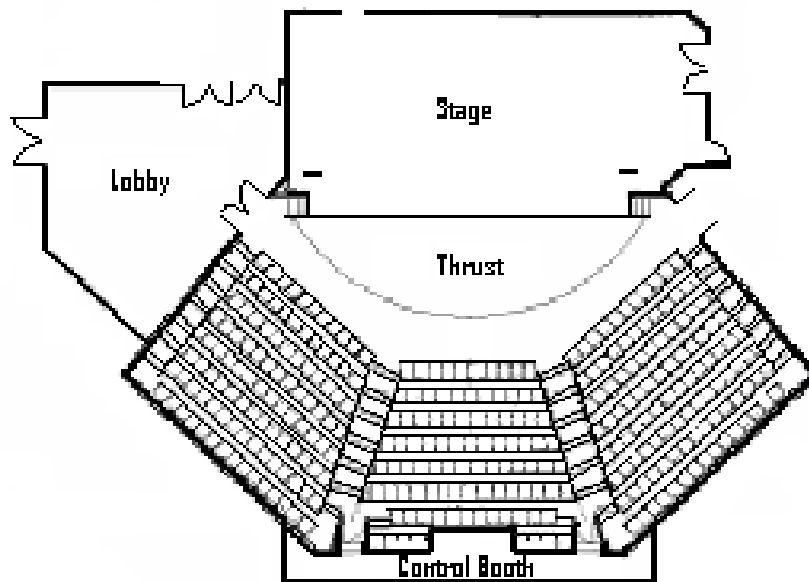
The Theatre itself is equipped with a high—quality performance PA, complete with a selection of microphones suitable for all type of events. There is a 96 channel, DMX control lighting board, and all the support infrastructure necessary to produce or host any kind of event. Additional power (50A) has been added Stage left, to accommodate all power needs.

The Theatre is climate controlled, so all heating and cooling is automatic based on room usage. There are three large makeup areas (enough space for 30-40 people). The workshop is located beside the stage, which comes complete with it's own loading dock.

In-house technical support is available to assist you with your events

Audience Space

Type & Number of Seats	315 varying in width 18" - 22"
Wheelchair Accessibility	4 removable pairs of seats create 4 wheelchair spaces front row
Number of Vertical Aisles	4
Elevation from First Row to Last Row	9' 5"
Front of Thrust to First Row	8'
Front of Thrust to Last Row	27'
Stage height from Auditorium Floor	2'



Stage Details

The Stage in the Charlie White Theatre has been built with convenience in mind.

There are 3 separate entrances onto the stage including a large pair of oversized double doors Stage Left, a set of moveable panels that create a 16' x 8' opening at the Upstage wall, and standard 34" wide doors both Stage Right and Left which are wheelchair accessible.

The Thrust Stage is made up of modular panels on legs that lock together to form a semi-circle in front of the Stage that adds an additional 12' depth.

Wing Space	<i>Stage Right</i>	3' 6" pros. to wall
	<i>Stage Left</i>	11' pros. to wall
Stage	41 ft. width at proscenium x 21 ft. depth behind proscenium	
	26 ft. depth (not including Thrust)	
Area of Thrust	Approx. 430 sq. ft. (12 ft. depth at center stage)	
Overall Stage Area	1750 sq. ft.	
Back Stage Area	780 sq. ft.	
Floor Material	2 layers 3/4" MDF - 2 x 4 sleepers on the flat on top of concrete (screws and "duct tape" are <u>not permitted</u>)	
Stage Access	1 - 32" door Stage Right	
	1 - 32" door Stage Left	
	1 - set 8' high x 7' 6" wide Double Doors Stage Left	
	16' x 8' opening in the back wall of stage, closed by 2 folding panels	

Draperies

Our Draperies were chosen to match the decor of the room. The Main Drapes are Regal Red, as is the Thrust skirt. All other Draperies are Black, with one White Scrim.

All Draperies have been treated and are fire resistant according to NFPA 701

Main Curtain

Regal Red Velour

Cord - operated Track

Wing Draperies

2 - 16' x 8' Black Velour

2 - 16' x 7' Black Velour

2 - 16' x 6' Black Velour

2 panel 16' x 21' Black Velour Traveler
(hand operated with three tracks:
upstage, mid stage and 6ft. behind
pros arch)

Cyclorama

16' x 30' White Scrim

Lighting System

Lighting Console: in Control Booth (Centre, back of Auditorium)

ETC ION 1k : 2x10 and 2x20 Fader Sidecars, 19" Touchscreen

2 universe DMX. Wireless access via iPad / iPod

1 - TRIPP-LITE Uninterruptible Power Supply

1 - PSU18 - DMX power supply for Scrollers and Mirrors (on Catwalk)

2 - Elation 4-Way DMX splitter (on Catwalk)

Dimmer Pack: ETC Sensor SR 48 (96 - 2.4k Dimmers : Located under Theatre seating)

Type / Location of Drops: 90 Circuits - 20A 125V Twistlock (HBL 2311)

48 FOH Grid, 38 Stage Grid, 4 at Upstage Wall (6 circuits dedicated to House lights)

25 ft socapex with break ins/outs

Architectural Lighting Control: Control Booth, Stage Left via keypad or by ETC Ion console

Fixture List

14 - ETC Source 4 36° ellipsoidal

16 - ETC Source 4 19° ellipsoidal (6 - currently used for permanent "I-Cue" fixtures)

20 - ETC Source 4 26° ellipsoidal (2 - currently used for permanent "I-Cue" fixtures)

10 - ETC Source 4 50° ellipsoidal

7 - ETC Source 4 Panel

8 - Altman 1KAF 6" Fresnel / barn doors

11 - Selecon 7" Fresnel

6 - Elation Platinum Spot 5R Pro moving head fixtures (over Stage & FOH)

7 - ETC Selador VIVID-R 11" LED (Cyclorama)

15 - ETC Desire40 Lustr+ LED Wash (5 units in permanent positions over Stage & Thrust)

8 - Chauvet Colorado-1 Quad Zoom

4 - MC Lites 3 - cell Cyclorama (Not currently in use)

6 - Selecon Single cel HUI's with Ground row feet

8 - Rosco "I-Cue" mirrors

6 - Spectrum 'Broadway' Scrollers

6 - Type 'B' Gobo Holders

2 - Entela Mini 300w Follow Spots

1 - UltraTec RADIANCE Hazer

Catwalks (*Accessible by ladder before or after events only*)

Sound Reinforcement

Audio Console in Control Booth (Centre, back of Auditorium)

1 - ALLEN & HEATH iLive System: T-112 Mixing surface, iDR-16 Mix Rack in Booth: 16 inputs & 8 outputs. iDR-48 Mix Rack on Stage.

2 - Audio Technica ATH-M40x Stereo Headphones

Audio Technica Wireless Receivers * (See below)

1-DENON DNT620 CD/TD Combo. Wire remote capable, dual output-balanced & RCA, headphone jack with separate volume control, pitch control

1 - STANTON C-400 Single CD Player

Telex 2 Channel Com System : Wall panels in Dressing Room. FOH on Channel 2 with program sound feed. 4-Wired belt packs

Base Station and 2 belt packs in booth. SR and SL Belt packs on Channel 1

Listen LT-800 Assisted Listening system (fed with program Sound) with 12 receiving units

Input Rack and Speaker Processing (Upstage Left)

Input/Output Panel: Allen & Heath iDR-48 Mix Rack: 48 in & 24 out (4 outs used for Mains- L, C, R, Subs)

Processor - EV Netmax N8000 System Controller

4 - EV CPS 2.12 Power Amps 2 x 1200 watt / channel @ 4 ohms

1 - SURGEX Power conditioning

1 - TRIPP-LITE Uninterruptible Power Supply

FOH Speaker Cabinets

3 - EV EVF-1122S/126 12" + horn (Bi-Amped)

4 - EV TX1181 18" Subs (located under Thrust stage)

Microphones

5 - SHURE BETA 58A

2 - SHURE SM58

3 - SHURE BETA 57A

2 - SHURE SM57

2 - SHURE BETA 91

6 - SHURE QLXD4 Digital Wireless Mic Receiver

5 - SHURE QLXD2/Beta58 Handheld Wireless Mic

1 - SHURE QLXD2/Beta87A Handheld Wireless Mic

4 - SHURE QLXD1 Belt Pack Transmitter

2 - SHURE WCM16 Headworn Microphone

- 2 - SHURE WL185 Lavalier Microphone
- 2 - AKG C535EB Condenser mic
- 2 - AKG C419 ("Clip-on" instrument mic)
- 2 - Sennheiser 906e Dynamic Instrument mic
- 2 - Sennheiser 614 Condenser mic
- 1 - Sennheiser 900 series Drum Mic Kit (1-902, 4-904, 2-914)
- 6 - *Audio Technica 3000 series receivers (*Currently not in use)
- 4 - *Audio Technica Wireless Lavalier Mics and transmitters
- 4 - *Audio Technica Handheld Wireless Mics
- 2 - Radial Pro48 DI boxes
- 4 - Radial Pro DI boxes
- 2 - Radial Pro D2 Stereo box
- 1 - Radial Pro AV1 box
- 1 - ART Dual Passive DI box
- 12 - Tall Tripod Boom Stand
- 4 - Tall Round Base Stand
- 4 - Short Tripod Boom Stand

Portable PA / Monitor Rig

- 1 - Behringer X-32 Digital Audio Console w. WiFi
- 9 - EV EXL 112P 12" + horn, 1000 watt, Bi-amped Powered Monitors

- 1 - ALLEN & HEATH GL3300M824C Mixing Console :
 - 24 Channel input/direct out, 8 subgroups, 8 aux, 4 band eq/2 mid sweeps
- 2 - EAW Two - way 12" + 2" Horn, Full Range Vented Trapezoid Loudspeaker Enclosure
- 2 - EAW 18" Vented Trapezoidal Subwoofer Speaker Enclosure
- 1 - EV Dx38 2-in 4-out digital loudspeaker processor, EQ, Delay, compressor/limiter, front panel display, PC remote capable
- 3 - ASHLY GQX-3102 Stereo 31 band, 1/3 Octave Equalizer (1 - FOH / 2 - Monitors)
- 2 - ASHLY CLX-52 Dual Channel Compressor/Limiter
- 1 - CREST AUDIO CPX2600 Stereo 900Watt/channel @ 4 Ohm Commercial Power Amplifier
- 1 - CREST AUDIO CPX1500 Stereo 500Watt/channel @ 4 Ohm Commercial Power Amplifier
- 1 - EV Q1212 2 x 1200 watt/channel @ 4 ohms Power Amplifier
- 1 - BEHRINGER DSP110P Digital Stereo Feedback Destroyer (Not in use)
- 1 - LEXICON MPX-1 Multi-Effects Processor
- 1 - YAMAHA SPX990 Multi-Effects Processor

Stage Power

- 1 - 200A Disconnect - Upstage Right [Permit Required]
- 1 - 50A Stove Plug - Stage Left

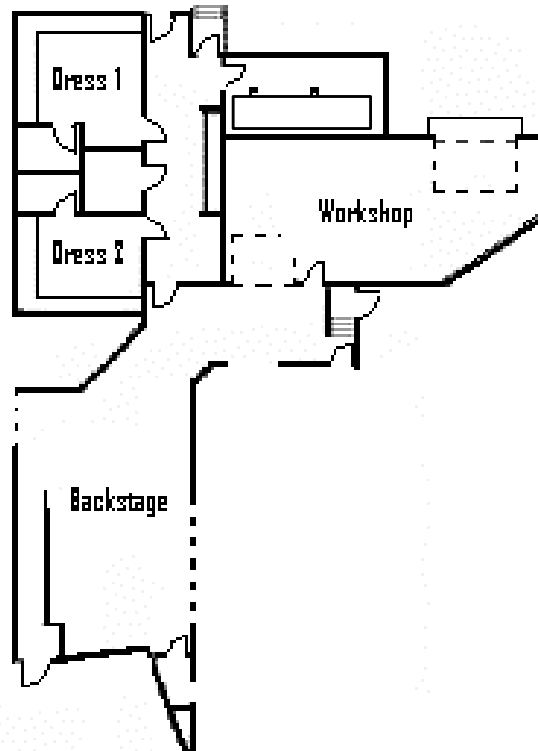
Projection Facilities

There is a 12' x 12' Electric drop down screen in front of the proscenium arch operated from the Control Booth.

- 1 - NEC PA 521U 4000 Lumen Projector hung from FOH 2 .

Cast / Crew / Makeup

- | | |
|--------------------------------|---|
| Dressing Room 1 | 254 sq. ft. / 33 ft. counter space and lighted mirrors / 1 powder room |
| Dressing Room 2 | 186 sq. ft. / 28 ft. counter space and lighted mirrors / 1 powder room |
| Workshop / Loading Dock | 500 sq. ft. with loading bay located North-West corner of the building / 8' overhead door access to workshop and backstage area |



Socan Fees

Information regarding Socan Fees can be obtained from Client Services, (250) 656-0275

Use of Hazardous Materials

All Hazardous materials use and Special Effects must be cleared with the TD prior to arriving for load-in.

Government of Canada legislation requires that the use of 'controlled' products in the theatre comply with the regulations listed in the Workplace Hazardous Materials Information System. Controlled products include (but are not limited to):

- Compressed gas
- Flammable and combustible material
- Oxidizing material
- Poisonous and infectious material
- Dangerously reactive material

Regulations require that:

- Anyone using controlled products in the workplace must be informed as to it's safe storage, handling, use and disposal
- All containers of controlled products must have warning labels attached that meet the regulation requirements
- Material Safety Data Sheets for any controlled product must be available and maintained in the immediate work area

Smoking in the theatre is prohibited under CRD Bylaws

REVISED: APRIL 16/2018